

# HPCO<sub>2</sub> Component Description

## Discharge Head, Plain Nut



Effective: January 2019

K-81-1060 Rev AD

P/N: WK-872450-000

### FEATURES

- Forged brass parts
- Integral check feature
- Swivel Connection onto Discharge Valve (1/2" or 5/8")
- 0°F (-18°C) to 130°F (55°C) agency temperature range
- Underwriters' Laboratories Listed - File Number EX923
- Factory Mutual Approved - Standard 5420
- United States Coast Guard Approved
- Various marine Class Society Approvals

### DESCRIPTION

The plain nut discharge head attaches to the discharge valve on the Kidde High Pressure Carbon Dioxide (CO<sub>2</sub>) cylinder assembly secured at the project site. The discharge head uses CO<sub>2</sub> pressure to open the discharge valve. Pressure may be applied from the cylinder, when fitting a control head to the discharge valve, or applied from the manifold connection. This feature allows the plain nut discharge head to be fitted to either a master cylinder(s), which are fitted with a control head, or each of the remaining manifold cylinders. Additionally, this feature simplifies installation and periodic service as no additional actuation hose/tubing is required between each cylinder.

The discharge head also features a metal to metal check, which eliminates the need for a separate check valve at each manifold connection.

A discharge flex hose connects the discharge head to the system manifold. Alternatively, a swivel adapter may be used in place of a discharge flex hose to connect to the system manifold. A discharge head needs to be ordered for each cylinder assembly.

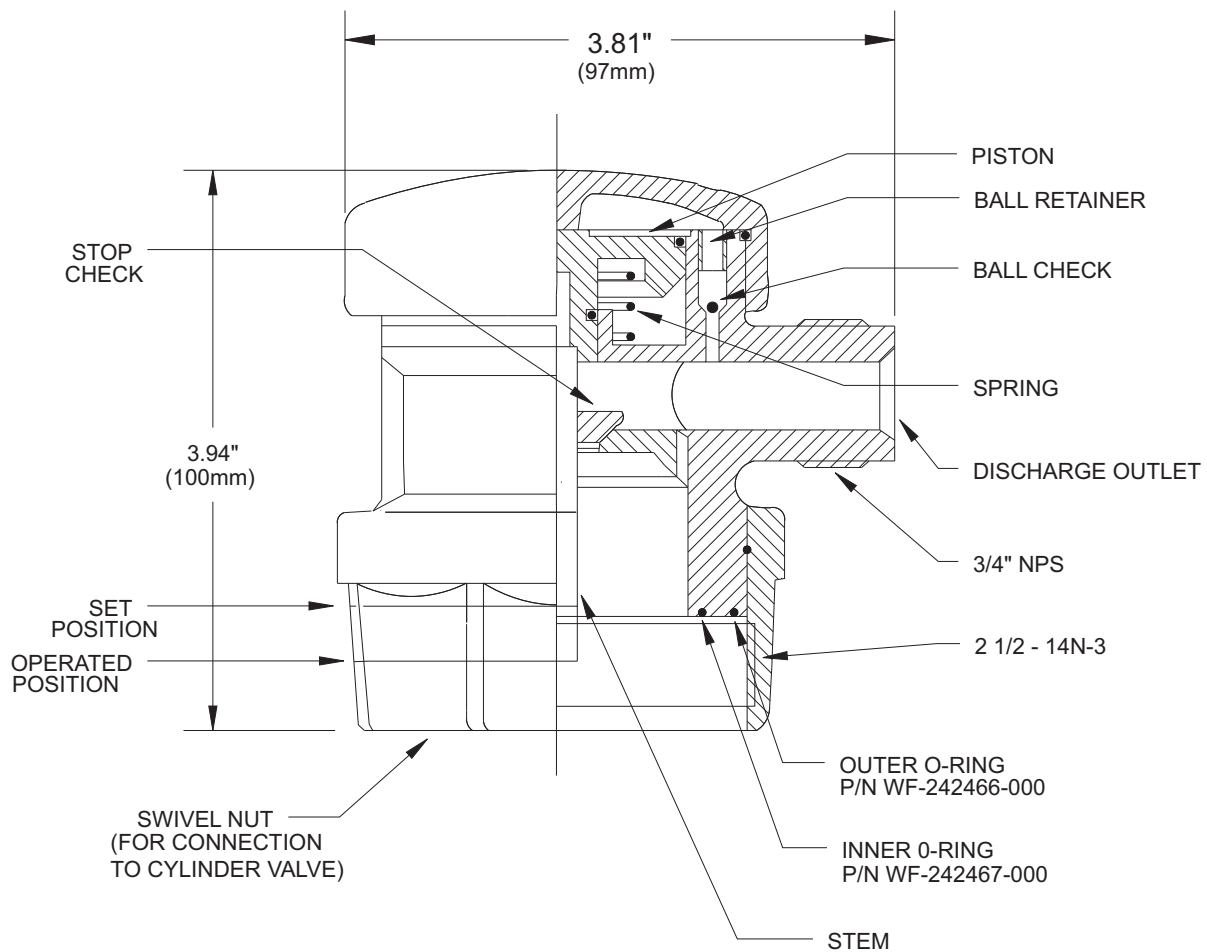


### ORDERING INFORMATION

Description	Part Number
Discharge Head, Plain Nut	WK-872450-000

### REFERENCED COMPONENTS

Description	Reference Data Sheet
Cylinder & Valve Assembly, 75/100-lbm	K-81-1010
Cylinder & Valve Assembly, 25/35/50-lbm	K-81-1020
Discharge Head, Groove Nut	K-81-1070
Discharge Hose, 1/2" NPT	K-81-1080
Discharge Hose, 3/4" NPT	K-81-1090
Adapter, Swivel	K-81-1105



**MATERIALS**

**BODY: BRASS**

**O-RINGS: RUBBER**

**SPRING: STAINLESS STEEL**

**BALL CHECK: MONEL**

**STOP CHECK: BRASS**

**EXPORT INFORMATION (USA)**

Jurisdiction: EAR

Classification: EAR99

This document contains technical data subject to the EAR.

KIDDE is a registered trademark of Kidde-Fenwal, Inc., or its parents, subsidiaries or affiliates.

This literature is provided for informational purposes only. KIDDE-FENWAL, INC. believes this data to be accurate, but it is published and presented without any guarantee or warranty whatsoever. KIDDE-FENWAL, INC. assumes no responsibility for the product's suitability for a particular application. Product features specified are only applicable when the fire suppression system is correctly designed, installed, maintained and serviced by trained, authorized Kidde Fire Systems distributors as per the applicable design, installation, operation, and maintenance manuals. If you need more information on this product, or if you have a particular problem or question, contact: KIDDE-FENWAL, INC., Ashland, MA 01721 USA, Telephone: (508) 881-2000.